

Parabolic Antenna 5,7 GHz – 0,6 e 1,2 m



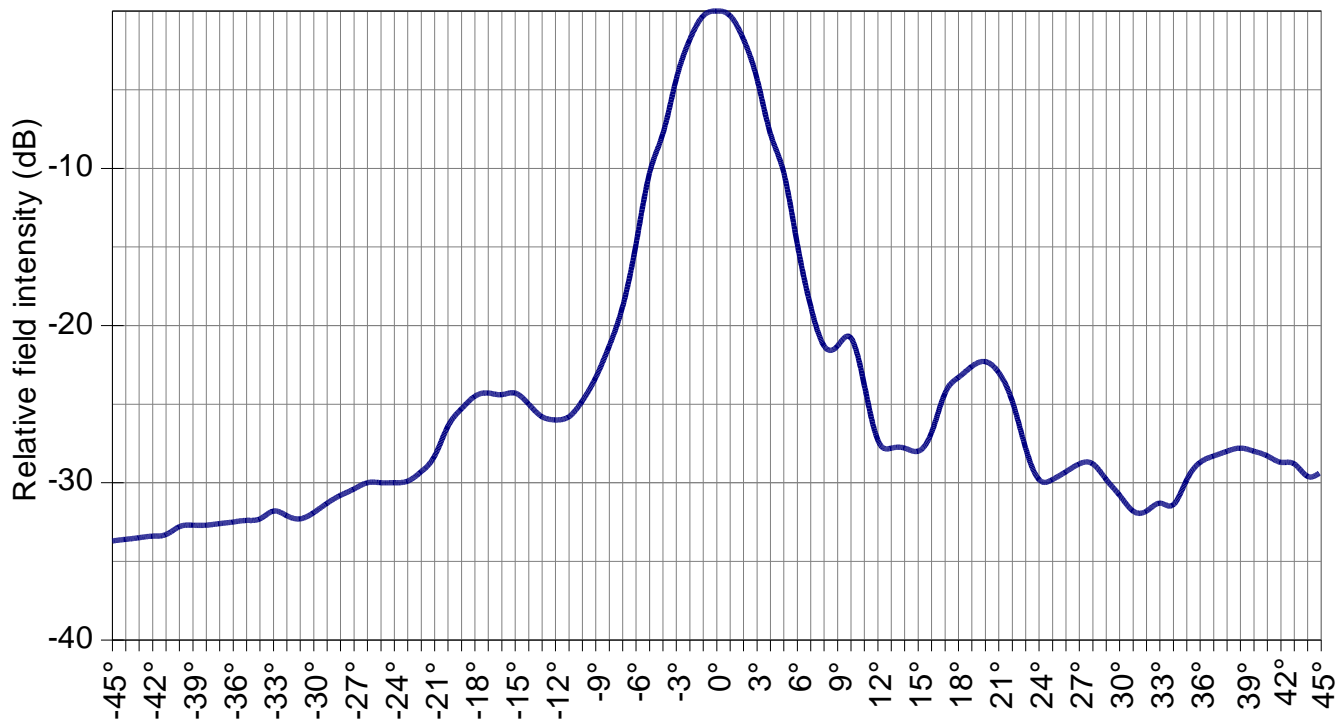
Technical Characteristic

For 0,6 m

Reflector	Solid
Faixa de Frêquencia	5725 – 5850 MHz
Diâmetro	0,60 m
Potência de entrada	25 Watts
Gain	28 dBi
Half power angle horizontal	5°
Half power angle vertical	4,5°
Front to back ratio	35 dB
VSWR	1,3:1
Polarization	Linear
Área exposta frontal	0,24 m ²
Weight	5 Kg
Connector	CPR 137 G

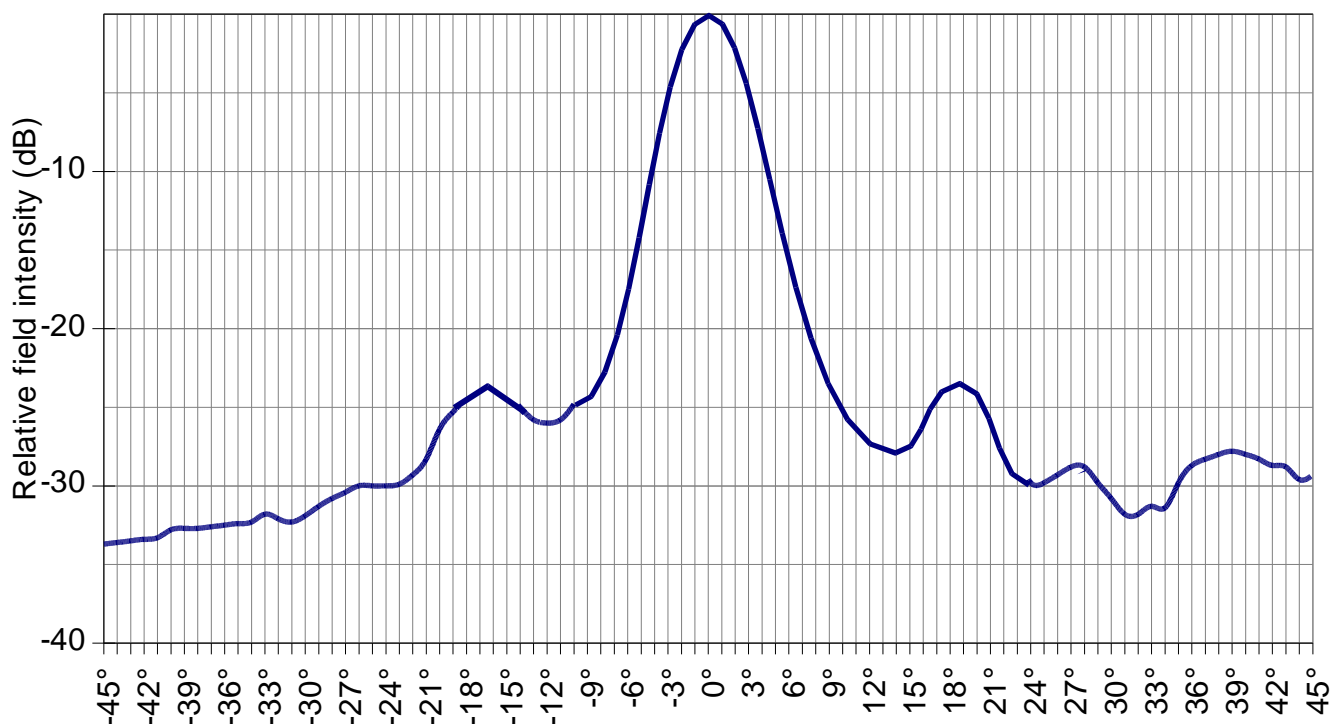
PB 06 57

Horizontal pattern for the horizontal polarization – Half power angle: 5,0°



PB 0657

Horizontal pattern for the vertical polarization – Half power angle: 4,5°



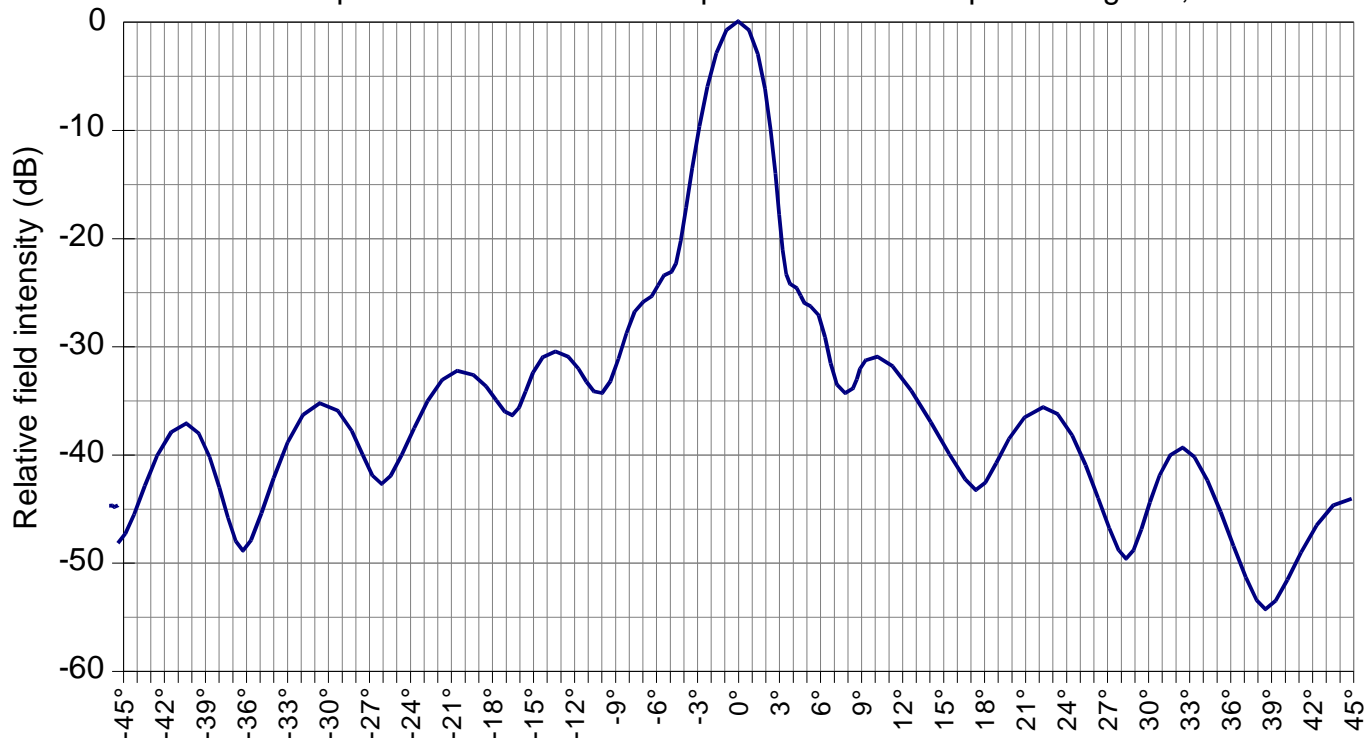
Technical Characteristic

For 1,2 m

Frequency range	5725 - 5850 MHz
Polarization	Linear
Input power	25 Watts
Gain	34 dBi
Half power angle horizontal	2,95°
Half power angle vertical	2,2°
Diameter	er1,20 m
VSWR	1,2:1
Connector	CPR137 G
Front to back ratio	42 dB
Discrimination of cross pol.	30 dB
Windload	1,2 Kg
Weight	28 Kg

PB 12 57

Horizontal pattern for the horizontal polarization – Half power angle: 2,95°



PB 12 57

Horizontal pattern for the vertical polarization – Half power angle: 2,2°

